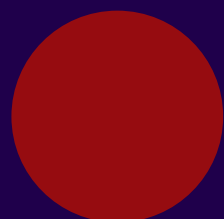


# WorldCare Explained



*Individuals and families*



A woman with long, wavy brown hair is blowing bubbles. She has her eyes closed and a slight smile. She is holding a red bubble wand in her right hand, which is adorned with a ring and a bracelet. Several large, iridescent bubbles are floating around her. The background is a blurred green, suggesting an outdoor setting. A semi-transparent purple box is overlaid on the right side of the image.

About Us

An innovative leader  
in high-end health care

## Now Health International

Our promise to our customers is in our name: 'Now' is clear, innovative and accessible. This means clear, relevant information, easy-to-use online tools and fast service from people who respect your time. Our products are designed to be comprehensive and benefit rich.

Now Health International is a global business with its headquarters in Hong Kong and regional service centres in Singapore, Jakarta, Hong Kong, Shanghai, Dubai and the United Kingdom, Malta and Spain.

In July 2015, Now Health's investor acquired Best Doctors Insurance, a major medical insurance provider with distribution throughout Latin America, the Caribbean and Canada.

The combination of the two businesses creates one of the largest providers of high-end international private medical insurance globally, with 16 sales/service offices, 125,000+ members, 407 staff and 5,000+ distribution partners.

## Best Doctors Insurance

Best Doctors Insurance is the leading international health insurance company in Latin America, the Caribbean and Canada. At Best Doctors Insurance we have a clear vision: to help our members connect with the very best healthcare, with access to the best-quality hospitals and specialised centers around the world.

Best Doctors Insurance offers top-quality medical insurance plans; each carefully designed to deliver a full range of exclusive benefits and services for our members. The result?

Our members can be certain they have the best health insurance plan that will help them, not only by paying the medical expenses but also guiding them through the complexities of the health care system when they need medical care.

# 4



Continents

# 125,000+

Members



# 407

Staff



# 5,000+

Distribution



Partners  
Globally

# 16

Offices





## Our Global Presence

Our main markets are Asia Pacific, Canada, Caribbean, United Kingdom, Europe, Latin America and the Middle East, offering personalised customer service from our 16 offices around the globe.



## Our Awards

Our ongoing commitment to top-end products and service has won us a number of awards for international health insurance. Our award winning innovative service proposition provides you with peace of mind that we will deliver a fast, accurate service when you need it most. Digital tools such as our smartphone App also make it even simpler and quicker to submit claims or find a medical provider, creating an exceptional customer experience.

We are proud of our recognition from the worldwide medical insurance industry and continue to improve and develop our offer to ensure we retain our position as the leading innovator in international health insurance.

## Our Insurance Partner



Our insurance partner in Singapore is Somp Insurance Singapore Pte. Ltd. Somp Insurance Singapore was established in January 2013 when Tenet Insurance Company Ltd. merged with Somp Japan Insurance (Singapore) Pte. Ltd. In January 2014, Somp Insurance Singapore further merged with NIPPONKOA Insurance Co., Ltd., Singapore Branch, by acquiring its general insurance business to form an even larger entity in Singapore. Somp Insurance Singapore has been a part of the Singapore history since 1957 (as Tenet Insurance), while Somp Japan group and NIPPONKOA Insurance Group have their histories stretching back to 1888 and 1892.



# ► Our Promise to You

## Service Promise

Your time is precious. We understand you need to know how quickly we will handle your requests. That's why we've made six promises about how fast we can deliver key services, to provide you with peace of mind. These are:

1



### ***Fast Claims Processing***

We commit to processing your claims quickly. Providing we have all the information we need, we aim to process eligible claims within five working days

2



### ***Accessing Medical Care***

If you need to access medical care that needs to be pre-authorised, we will place guarantees of payment with medical providers within five working days, so you can access treatment as quickly as possible

3



### ***24/7 Customer Service***

Our 24/7 customer service teams understand your priorities and respect your time. We respond to all enquiries within one working day

4



### ***Quick Underwriting Decisions***

When you apply for your plan, we will respond to all our underwriting-referred business within two working days, so you receive a decision as quickly as possible

5



### ***Plan documents***

When you buy your plan, you can use your secure online portfolio to view and download plan document

6



### ***Go Paper-free***

You can use your secure online portfolio to download your membership card and add it to your smartphone wallet

## ► Why Choose Us ?

With us, it's easy to get immediate access to top-quality healthcare anywhere in the world.

We make it simple to choose the right cover and access the best medical care for you and your family.



### **Secure**

Reinsured by the financial strength of RGA, a global reinsurance leader in financial protection and the third largest reinsurer in the life and health sector worldwide, operating in 26 countries around the world, delivering expert solutions in individual group life and health reinsurance



### **Fast**

Our quick and simple claims process means you can use our smartphone App, website or email us all their claims for fast reimbursement



### **Service Excellence**

Our peerless customer experience is delivered via a unique set of service promises which set out how fast we will complete important tasks like processing claims



### **Experienced**

We are international health insurance experts. Our senior management team has over 200-years combined experience and >10% employees are medically trained



### **Comprehensive**

WorldCare is one of the most comprehensive, benefit-rich products in the international health insurance market today



### **Always on**

You can access our customer service teams 24-hours a day, 365-days a year



### **Innovative**

Our state-of-the-art website provides instant access to plan documents, management information and claims tracking information



### **Access**

Our worldwide network of medical providers offers access to healthcare without you having to pay up-front



### **Transparent**

We operate an up-front approach to underwriting which means that all our members know exactly what they're covered for and what they're not



### **Global**

Now Health's local service offices in Asia Pacific, the Middle East, Europe and the Americas offer a truly worldwide service



### **Family Discount**

Enjoy a family discount if you add a spouse and at least one child to the plan. For large families discount, you can add a spouse and at least three children on the plan



### **No Claims Discount**

If you are lucky enough not to have claimed, we give you a discount for every year you stay claim free

## ► Our Added Value Services

### Support to stay well and support when you need it

At Now Health we think it's important to support you with your overall health and wellbeing. That's why we offer a range of added value services in addition to your core plan protection, so you know we're there for you, every step of the way.



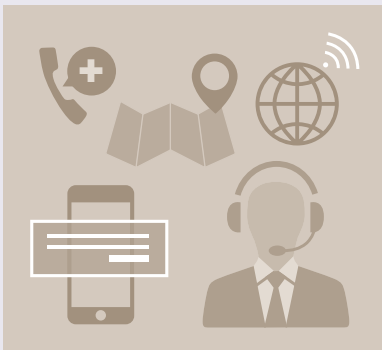
#### Second Medical Opinion

**Why:** A second medical opinion can help provide reassurance, particularly for those who are uncertain about their diagnosis, have a complex condition, or are unsure about what treatment plan to choose.

**What:** Leveraging our extensive network of medical experts worldwide, we provide our members with a second medical opinion service to help ensure you get the right diagnosis and the right treatment.

Members can access this service for both acute and long term conditions, and in most cases the second medical opinion will be delivered within a matter of days.

**How:** Simply contact your local Customer Service team to use this service.  
CustomerService@now-health.com



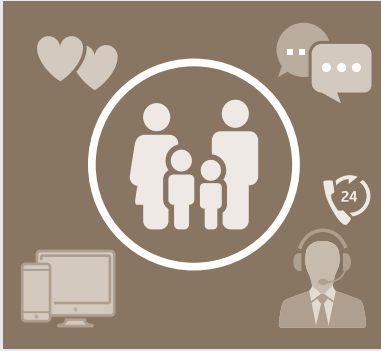
#### Global Concierge Service

**Why:** As an international health insurance provider, we recognise that many of our members may choose to seek treatment overseas, away from their home country.

**What:** To help make this process easier for you, we provide concierge support to help you manage the process. This includes:

- ✓ Recommending where to get treatment
- ✓ Support to book medical appointments
- ✓ Placing guarantees of payment with the hospital, including in an emergency, so you don't need to pay up front

**How:** Simply contact your local Customer Service team to use this service.  
CustomerService@now-health.com



## Member Assistance Programme (individuals)

**Why:** To support our members with their overall wellbeing as well as their physical health, ensuring our international health plans continue to provide members with a broad health and wellness package.

**What:** The Members Assistance Programme is provided by LifeWorks (TELUS), it includes:

- ✓ Instant access to a wide range of articles and featured audio advice about well-being via the LifeWorks portal and App
- ✓ The wellbeing and personal development videos covering from useful health tips to advice on how to manage life or legal aspects, family issues, workplace or financial challenges
- ✓ Confidential and secure telephonic or video sessions from specialized professionals in counselling, social work, psychology, or human services available 24/7 in multiple languages
- ✓ Members are eligible for 5 sessions of short-term counselling per plan year

**How:** Individual and family members can log-in to the [LifeWorks Portal](#) or downloading the LifeWorks App. Learn more about the Member Assistance Programme [here](#).



# ► Our Digital Tools

## Our Website

### Manage your plan online

The Now Health International website is designed to make it simpler to manage your international health insurance from accessing your plan documents to tracking your claims.

Members can access their information at any time with Now Health, as all your details are stored in your secure online portfolio, which you can access 24-hours a day from anywhere in the world.

You can view and download all your plan documents including your certificate of insurance, members' handbook and any form you might need to manage your plan.

### Submit and track your claims online

You can submit and track the status of all claims you make online. As soon as we receive your claim, we will notify you by email and SMS (if you have chosen this option).



## Our Smartphone App

Our smartphone App let's you claim and find doctors at the touch of a button. You can access thousands of medical professionals worldwide and enjoy quick and easy claims handling.

## Our Mobile Pass

- Instantly access key plan information on your smartphone, including your plan type, expiry date and whether any Annual Deductible applies
- Get in touch with us via the click to call feature
- Validate your cover when seeking medical treatment in our network
- Access your secure online portfolio to submit claims, pre-authorisation requests and more!
- Available for both iPhone and Android wallet



## ► Our Mobile Pass

Our secure online portfolio is designed to make it easy to access all your plan information in just a few clicks. You can use secure online portfolio to download membership card and add it to smartphone wallet.

We work closely with the medical providers in our network so they recognise your Now Health card. Any out-patient benefits you have selected will be clearly labelled on the card.

### On the Card front



SAMPLE

- Plan name and option
- Membership number
- In/Day-Patient Deductible
- Out-Patient Co-Insurance
- Direct Billing
- A barcode for medical providers

### On the Card back

#### YOUR PLAN

##### VALIDATE MY PLAN

Name: Sara Mirae  
NHI Membership Number: SGFNCAD1234567  
Start Date: 01-APR-23  
Expiry Date: 31-MAR-24  
In/Day-Patient Deductible: SGD 0  
Out-Patient Excess: Nil per visit  
Out-Patient Co-Insurance: Nil%  
Direct Billing: - Out-Patient & In/Day Patient  
- Maternity Nil Co-Insurance  
Area Of Cover: Worldwide Excluding USA  
Network:  
Group Name: N/A

View your full plan benefits. Tap here to log into your portfolio and select 'My Plan'.

##### SUBMIT CLAIM

Use the app button at the top of the pass to use the mobile app.  
Tap here to log in to your portfolio.

##### TRACK YOUR CLAIMS

Tap here to log into your portfolio and select 'My Claims'.

##### HOW TO REACH US

Tap here to chat online

##### CUSTOMER SERVICE:

Singapore: +6568802300  
Rest of the World: +97144501510  
UAE: +97144501410  
Asia Pacific: +85222797310

Indonesia Toll-free: 08001689900  
Indonesia Toll: +622127836910  
China: +862161560910  
UK: +441276602110  
Malta: +35622605110  
Spain: +34911841690

##### 24-HOUR EMERGENCY ASSISTANCE:

Singapore: +6568802304  
Rest of the World: +97144501540  
UAE: +97144501440  
Asia Pacific: +85222797340  
Indonesia: +622127836940  
China: +862161560914  
UK: +441276602110  
Malta: +35622605240  
Spain: +34911841691

##### MAILING ADDRESS:

Now Health International (Singapore) Pte. Ltd.  
4 Robinson Road, #07-01A/02 The House of Eden  
Singapore 048543

##### INSURANCE DETAILS

This plan is insured by Sompoo Insurance Singapore Pte. Ltd.

Please present this card to your medical provider as evidence of your cover with us.

This membership card is the property of Now Health International (Singapore) Pte. Ltd. and will be voided if your cover stops mid-way through a plan year.

##### LATEST NEWS

Tap here to find out the latest news from us.  
Tap here to read our blog.  
Tap here to watch our explainer videos.

- Member name
- Membership number
- Start Date
- Expiry Date
- Plan information
- Submit claim
- Track your claims
- Customer Service
- 24-HOUR Emergency Assistance
- Mailing address
- Insurance details
- Latest news

SAMPLE

## ► How to Use Your Plan

When you need to use your plan, we've designed the process to be as straightforward as possible.

### When you need out-patient treatment

If you select a plan that includes out-patient treatment, you can go to any medical practitioner, pay for your treatment and claim back your expenses. You won't have to pay anything if you have access to our Out-Patient Direct Billing Network. You can find a medical provider in our network from [www.now-health.com](http://www.now-health.com) or download our smartphone App.

### When you need in-patient or day-patient treatment

If you need to be admitted to hospital for day-patient or in-patient treatment, contact us and we will place a guarantee of payment with the medical provider so you don't need to pay anything. We aim to do this within five working days of your call.

### When you need preventive care

If you select one of our wellness additional options, you will be able to access screening, optical and vaccination benefits to safeguard you and your family's future health.

### Accessing help

Our customer service teams around the world are accessible 24-hours a day, 365-days a year. This service is available to you no matter where you are in the world, no matter of what time of day it is. They are on hand to answer any question about your plan, benefits, claims or if you have an emergency and need immediate help.

## ► How to Claim

If you've accessed treatment within our out-patient direct billing network or if we've placed a guarantee of payment for you, there's no need to do anything further.

If you've had to pay and claim, we will process your eligible claims within ***five working days***.

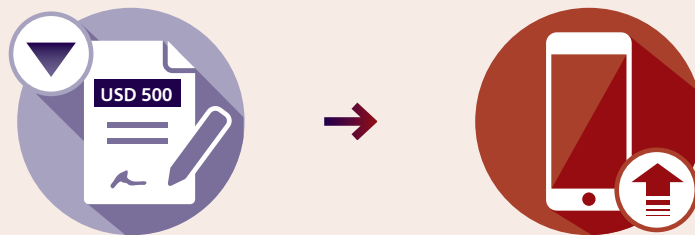
You can track the status of all your claims in our secure online portfolio. We will email and SMS you updates as they happen.

### ***All out-patient claims, and all in/day-patient claims***

**under USD 500/SGD 650** per medical condition

You can claim online using our secure online portfolio or smartphone App.

Alternatively, if you prefer an offline solution you can email, post or fax us the front of the claim form and your scanned receipts.



### ***All in/day-patient claims***

**over USD 500/SGD 650** per medical condition

Complete the front of the claim form and ask your medical practitioner to complete the back of the form.

Upload it using our secure online portfolio, or email or fax it to us with your scanned receipts, diagnostic reports and/or discharge reports.





# ► Introducing WorldCare

WorldCare is one of the most comprehensive, benefit-rich products in the international health insurance market today. There are four levels available: Essential, Advance, Excel and Apex. This means you can select the level of cover you prefer to suit your lifestyle, from basic medical treatment, to a more comprehensive package.



*You can shape the cover you want by adding the following options providing a more comprehensive package for you and your family.*

*See how you can take advantage of your WorldCare plan today!*

- We also have a range of annual **In and Day-Patient Deductibles** to suit your lifestyle. Deductibles give you greater flexibility to tailor your plan to your needs – from a high deductible to reduce your premium, to a low or nil deductible if you expect to use your plan frequently.



- If you choose an optional Deductible, on WorldCare Advance, WorldCare Excel or WorldCare Apex, you must also select a Co-Insurance Out-Patient Treatment option or an Out-Patient Per Visit Excess option. On WorldCare Essential if you choose an optional Deductible and an Out-Patient Charges option, you must also select a Co-Insurance Out-Patient Treatment option.

- Select **Extended Evacuation and Repatriation** and select **USA Elective Treatment** to give you greater peace of mind if you need to travel abroad.



- Add options of **Wellness, Optical and Vaccinations, Dental Care**, for added flexibility



- You can have an **Out-Patient Per Visit Excess** of either USD 25/SGD 30 or USD 15/SGD 20 per visit to an out-patient medical practitioner
- Choose the **Co-Insurance Out-Patient Treatment** option – pay either 10% or 20% of your out-patient treatment. There is a premium discount associated with this option based on the co-insurance you have selected.



- **Teleconsultation services** will be paid in full with Now Health International medical providers even if you have selected an Out-Patient co-insurance or Out-Patient per visit excess.

# ► WorldCare At a Glance

A summary of each plan is shown below.

WorldCare Essential	WorldCare Advance	WorldCare Excel	WorldCare Apex
Annual maximum up to <b>USD 3m/SGD 3.9m</b>	Annual maximum up to <b>USD 3.5m/SGD 4.55m</b>	Annual maximum up to <b>USD 4m/SGD 5.2m</b>	Annual maximum up to <b>USD 4.5m/SGD 5.85m</b>
✓ In-patient and day-patient care	✓ In-patient and day-patient care	✓ In-patient and day-patient care	✓ In-patient and day-patient care
✓ Out-patient charges	✓ Out-patient care	✓ Out-patient care	✓ Out-patient care
✗ Routine maternity care	✓ Menopause Hormone Replacement Therapy	✓ Menopause Hormone Replacement Therapy	✓ Menopause Hormone Replacement Therapy
○ Out-patient charges – Option 1/2/3	✗ Routine maternity care	✓ Routine & complex dental treatment	✓ Routine & complex dental treatment
○ Routine & complex dental treatment	○ Routine & complex dental treatment	✗ Routine maternity care	✓ Routine maternity care
○ Menopause Hormone Replacement Therapy	○ Annual deductible	○ Annual deductible	○ Annual deductible
○ Annual deductible	○ Out-patient per visit excess (USD 15/SGD 20, USD 25/SGD 30)	○ Out-patient per visit excess (USD 15/SGD 20, USD 25/SGD 30)	○ Out-patient per visit excess (USD 15/SGD 20, USD 25/SGD 30)
○ Co-insurance out-patient treatment (10%/20%)	○ Co-insurance out-patient treatment (10%/20%)	○ Co-insurance out-patient treatment (10%/20%)	○ Co-insurance out-patient treatment (10%/20%)
○ USA elective treatment	○ USA elective treatment	○ USA elective treatment	○ USA elective treatment
○ Extended evacuation and repatriation	○ Extended evacuation and repatriation	○ Extended evacuation and repatriation	○ Extended evacuation and repatriation
○ Wellness, optical and vaccinations – Option 1	○ Wellness, optical and vaccinations – Option 1,2	○ Wellness, optical and vaccinations – Option 1,2	○ Wellness, optical and vaccinations – Option 1,2
○ Wellness and vaccinations – Option 3	○ Wellness and vaccinations – Option 3	○ Wellness and vaccinations – Option 3	○ Wellness and vaccinations – Option 3
○ Hospital room restriction in Singapore	○ Hospital room restriction in Singapore	○ Hospital room restriction in Singapore	○ Hospital room restriction in Singapore
			○ Removal of Maternity



Cover available



Not covered



Optional

# WorldCare Benefit Schedule

Benefit	Essential	Advance	Excel	Apex
Annual Maximum Plan Limit	USD 3m/SGD 3.9m	USD 3.5m/SGD 4.55m	USD 4m/SGD 5.2m	USD 4.5m/SGD 5.85m
<b>1. Maintenance of Chronic Medical Conditions</b>	Not covered	Full refund	Full refund	Full refund
<b>2. Hospital Charges, Medical Practitioner and Specialist Fees</b> (i) Hospital charges for in-patient and day-patient treatment (ii) Related ancillary charges	(i) Full refund (ii) Up to USD 1,500/SGD 1,950 per medical condition	(i) Full refund (ii) Up to USD 1,500/SGD 1,950 per medical condition	(i) Full refund (ii) Up to USD 2,000/SGD 2,600 per medical condition	(i) Full refund (ii) Up to USD 2,500/SGD 3,250 per medical condition
<b>3. Diagnostic Procedures</b>	Full refund	Full refund	Full refund	Full refund
<b>4. Emergency Ambulance Transportation</b>	Full refund	Full refund	Full refund	Full refund
<b>5. Parent Accommodation</b>	Full refund	Full refund	Full refund	Full refund
<b>6. Renal Failure and Renal Dialysis</b> (i) Treatment of renal failure, including renal dialysis on an in-patient basis (ii) Treatment of renal failure, including renal dialysis on a day-patient or out-patient basis	(i) Full refund for in-patient pre and post-operative care (ii) Up to USD 50,000/SGD 65,000	(i) Full refund (ii) Up to USD 100,000/SGD 130,000	(i) Full refund (ii) Up to USD 100,000/SGD 130,000	(i) Full refund (ii) Up to USD 100,000/SGD 130,000
<b>7. Organ Transplant</b> (i) Treatment (ii) Donor medical costs	(i) Full refund (ii) Up to USD 50,000/SGD 65,000	(i) Full refund (ii) Up to USD 50,000/SGD 65,000	(i) Full refund (ii) Up to USD 50,000/SGD 65,000	(i) Full refund (ii) Up to USD 50,000/SGD 65,000
<b>8. Cancer Treatment</b>	Full refund	Full refund	Full refund	Full refund
<b>9. Pregnancy Medical Conditions</b>	Full refund	Full refund	Full refund	Full refund
<b>10. New Born Cover</b>	Up to USD 100,000/SGD 130,000	Up to USD 100,000/SGD 130,000	Up to USD 125,000/SGD 162,500	Up to USD 150,000/SGD 195,000
<b>11. Hospital Accommodation for New Born Accompanying their Mother</b>	Full refund	Full refund	Full refund	Full refund
<b>12. Congenital Disorder</b>	Up to USD 100,000/SGD 130,000	Up to USD 100,000/SGD 130,000	Up to USD 125,000/SGD 162,500	Up to USD 150,000/SGD 195,000
<b>13. Reconstructive Surgery</b>	Full refund	Full refund	Full refund	Full refund
<b>14. Rehabilitation</b>	Full refund for eligible In-patient Treatment only up to 30 days per medical condition	Full refund for up to 180 days per medical condition	Full refund	Full refund
<b>15. In-Patient Emergency Dental Treatment</b>	Full refund	Full refund	Full refund	Full refund
<b>16. In-Patient Psychiatric Treatment</b>	Full refund for up to 30 days	Full refund for up to 30 days	Full refund for up to 30 days	Full refund for up to 30 days
<b>17. Terminal Illness</b>	In-patient and Day-patient treatment up to USD 50,000/SGD 65,000 lifetime limit	Up to USD 50,000/SGD 65,000 lifetime limit	Up to USD 75,000/SGD 97,500 lifetime limit	Up to USD 100,000/SGD 130,000 lifetime limit
<b>18. Emergency Non-Elective Treatment USA Cover</b>	Full refund for accident requiring in-patient or day-patient care Illness: in-patient and day-patient care up to USD 25,000/SGD 32,500 Out-Patient Treatment in an Accident and Emergency Department in a hospital up to USD 500/SGD 650	Full refund for accident requiring in-patient or day-patient care Illness: in-patient and day-patient care up to USD 25,000/SGD 32,500 Out-Patient Treatment in an Accident and Emergency Department in a hospital up to USD 500/SGD 650	Full refund for accident requiring in-patient or day-patient care Illness: in-patient and day-patient care up to USD 35,000/SGD 45,500 Out-Patient Treatment in an Accident and Emergency Department in a hospital up to USD 500/SGD 650	Full refund for accident requiring in-patient or day-patient care Illness: in-patient and day-patient care up to USD 50,000/SGD 65,000 Out-Patient Treatment in an Accident and Emergency Department in a hospital up to USD 500/SGD 650
<b>19. Evacuation and Repatriation</b> <i>Evacuation</i> (i) Transportation costs in the event of Emergency Treatment and Medically Necessary transport and care not being readily available at the place of the incident. (ii) Reasonable local travel costs to and from medical appointments when Treatment is being received as a Day-Patient. (iii) Reasonable travel costs for a locally-accompanying person to travel to and from the Hospital to visit the Insured Person following admission as an In-Patient. (iv) Reasonable costs for non-Hospital Accommodation only for immediate pre and post-Hospital admission periods provided that the Insured Person is under the care of a Specialist.  Costs of Evacuation do not extend to include any air-sea rescue or mountain rescue costs that are not incurred at recognised ski or winter sports resorts.  <i>Repatriation to principal Country of Nationality or principal Country of Residence, as long as the journey is within one month of completion of Treatment.</i>	(i) Full refund (ii) Full refund (iii) Full refund (iv) Up to USD 200/SGD 260 per day, up to USD 7,500/SGD 9,750 per person, per evacuation  Full refund	(i) Full refund (ii) Full refund (iii) Full refund (iv) Up to USD 200/SGD 260 per day, up to USD 7,500/SGD 9,750 per person, per evacuation  Full refund	(i) Full refund (ii) Full refund (iii) Full refund (iv) Up to USD 200/SGD 260 per day, up to USD 7,500/SGD 9,750 per person, per evacuation  Full refund	(i) Full refund (ii) Full refund (iii) Full refund (iv) Up to USD 300/SGD 390 per day, up to USD 10,000/SGD 13,000 per person, per evacuation  Full refund
<b>20. Mortal Remains</b> (i) Transportation of body or ashes of insured person to country of residence or country of nationality, or (ii) Burial or cremation costs at the place of death	(i) Full refund (ii) Up to USD 10,000/SGD 13,000	(i) Full refund (ii) Up to USD 10,000/SGD 13,000	(i) Full refund (ii) Up to USD 15,000/SGD 19,500	(i) Full refund (ii) Up to USD 20,000/SGD 26,000
<b>21. Hospital Cash Benefit</b>	USD 125/SGD 165 per night	USD 175/SGD 230 per night	USD 225/SGD 295 per night	USD 275/SGD 360 per night

Benefit	Essential	Advance	Excel	Apex
<b>22. Out-Patient Charges</b> (i) Medical practitioner fees (ii) Teleconsultation (iii) Vitamins and minerals	▶ (i) and (ii) Pre-operative consultations within 15 days from the admission and post hospitalisation consultation within 30 days following discharge from hospital up to maximum USD 2,000/SGD 2,600 per medical condition ▶ (iii) Not covered	▶ (i) and (ii) Full refund ▶ (iii) Up to USD 150/SGD 195 per period of cover	▶ (i) and (ii) Full refund ▶ (iii) Up to USD 150/SGD 195 per period of cover	▶ (i) and (ii) Full refund ▶ (iii) Up to USD 150/SGD 195 per period of cover
<b>23. Menopause Hormone Replacement Therapy</b>	▶ Not covered	▶ Up to USD 500/SGD 650 per Period of Cover	▶ Up to USD 600/SGD 780 per Period of Cover	▶ Up to USD 750/SGD 975 per Period of Cover
<b>24. Day-Patient and Out-Patient Surgery</b>	▶ Full refund	▶ Full refund	▶ Full refund	▶ Full refund
<b>25. Out-Patient Psychiatric Illness</b>	▶ Not covered	▶ Up to USD 2,500/SGD 3,250	▶ Up to USD 5,000/SGD 6,500	▶ Up to USD 7,500/SGD 9,750
<b>26. Out-Patient Physiotherapy and Alternative Therapies</b> (i) Physiotherapy by a registered physiotherapist. (ii) Complementary medicine and treatment by a therapist. This benefit extends to osteopaths, chiropractors and podiatrists, chiropractors, homeopaths, dietician and acupuncture treatment but excludes physiotherapist covered in (i). We do not cover charges for general chiropody or podiatry.	▶ (i) Up to 5 sessions within 30 days after hospitalisation ▶ (ii) Not covered	▶ (i) Full refund up to a maximum 30 sessions ▶ (ii) Full refund up to a maximum of 30 visits	▶ (i) Full refund ▶ (ii) Full refund	▶ (i) Full refund ▶ (ii) Full refund
<b>27. Out-Patient Traditional Chinese Medicine and Ayurvedic Medicine</b> <b>Out-Patient Treatment</b> for therapies administered by a recognised Traditional Chinese <b>Medical Practitioner</b> or an Ayurvedic <b>Medical Practitioner</b> .	▶ Not covered	▶ Up to USD 1,000/SGD 1,300 per Period of Cover	▶ Up to USD 1,500/SGD 1,950 per Period of Cover	▶ Up to USD 3,000/SGD 3,900 per Period of Cover
<b>28. Nursing Care at Home</b> (i) Care given by a qualified nurse (ii) Emergency out-of-hours medical practitioner (GP) home visits	▶ (i) Up to USD 100/SGD 130 per day, up to 30 days per medical condition ▶ (ii) Not covered	▶ (i) Full refund up to 45 days per medical condition ▶ (ii) Not covered	▶ (i) Full refund up to 60 days per medical condition ▶ (ii) Not covered	▶ (i) Full refund up to 120 days per medical condition ▶ (ii) Up to five visits
<b>29. AIDS</b> Cover only available after three years of continuous membership	▶ In-patient and day-patient treatment only up to USD 25,000/SGD 32,500	▶ Up to USD 25,000/SGD 32,500	▶ Up to USD 40,000/SGD 52,000	▶ Up to USD 50,000/SGD 65,000
<b>30. Maternity</b> Costs incurred within 12 months of plan start date are excluded	▶ Not covered	▶ Not covered	▶ Not covered	▶ Up to USD 17,500/SGD 22,750
<b>31. Dental Care</b> (i) Routine dental treatment (ii) Complex dental treatment Costs incurred within nine months of plan start date are excluded. A co-insurance of 20% applies. Orthodontics subject to 50% co-insurance.	▶ (i) Not covered ▶ (ii) Not covered	▶ (i) Not covered ▶ (ii) Not covered	▶ (i) Up to USD 1,000/SGD 1,300 ▶ (ii) Up to USD 2,000/SGD 2,600	▶ (i) Up to USD 1,500/SGD 1,950 ▶ (ii) Up to USD 3,000/SGD 3,900



Benefit	Essential	Advance	Excel	Apex
<b>Additional options</b>				
<b>32. Dental Care</b> (i) Routine dental treatment (ii) Complex dental treatment Costs incurred within nine months of plan start date are excluded. A co-insurance of 20% applies.	(i) Optional Up to USD 250/SGD 325 per Period of Cover (ii) Optional Up to USD 1,000/SGD 1,300 per Period of Cover	(i) Optional Up to USD 250/SGD 325 per Period of Cover (ii) Optional Up to USD 1,000/SGD 1,300 per Period of Cover	Already covered	Already covered
<b>33. USA Elective Treatment</b>	Optional Up to USD 1.5m/SGD 1.95m	Optional Up to USD 1.5m/SGD 1.95m	Optional Up to USD 1.5m/SGD 1.95m	Optional Up to USD 1.5m/SGD 1.95m
<b>34. Co-Insurance Out-Patient Treatment</b> (i) 10% Co-Insurance Out-Patient Treatment (ii) 20% Co-Insurance Out-Patient Treatment	(i) Optional (ii) Optional	(i) Optional (ii) Optional	(i) Optional (ii) Optional	(i) Optional (ii) Optional
<b>35. Out-Patient Charges</b> (i) Medical practitioner fees (ii) Teleconsultation (iii) Vitamins and minerals This Benefit (i), (ii) and (iii) replaces Benefit 22 – Out-Patient Charges. (iv) a. Physiotherapy b. Treatment by Therapist c. Treatment for therapies by traditional Chinese medical practitioner or an ayurvedic medical practitioner (v) Out Patient Psychiatric Illness This Benefit replaces Benefit 25 – Out-Patient psychiatric illness (vi) Menopause Hormone Replacement Therapy This Benefit replaces Benefit 23 – Menopause Hormone Replacement Therapy	Optional (i) and (ii) Up to USD 5,000/SGD 6,500 (iii) Up to USD 150/SGD 195 per period of cover in aggregate of overall Out-Patient Charges Benefit limit (iv) Full refund up to 10 sessions Physiotherapy is limited to 10 sessions and not in addition to Benefit 26. (v) Up to USD 500/SGD 650 per period of cover and subject to a maximum of 10 sessions per period of cover (vi) Up to USD 400/SGD 520 per Period of Cover	Already covered	Already covered	Already covered
<b>36. Out-Patient Charges – Option 2</b> (i) Medical practitioner fees and maintenance of chronic conditions (ii) Teleconsultation (iii) Vitamins and minerals This Benefit (i), (ii) and (iii) replaces Benefit 22 – Out-Patient Charges. (iv) a. Physiotherapy b. Treatment by Therapist c. Treatment for therapies by traditional Chinese medical practitioner or an ayurvedic medical practitioner (v) Out Patient Psychiatric Illness This Benefit replaces Benefit 25 – Out-Patient psychiatric illness (vi) Menopause Hormone Replacement Therapy This Benefit replaces Benefit 23 – Menopause Hormone Replacement Therapy	Optional (i) and (ii) Up to USD 5,000/SGD 6,500 (iii) Up to USD 150/SGD 195 per period of cover in aggregate of overall Out-Patient Charges Benefit limit (iv) Full refund up to 10 sessions Physiotherapy is limited to 10 sessions and not in addition to Benefit 26. (v) Up to USD 500/SGD 650 per period of cover and subject to a maximum of 10 sessions per period of cover (vi) Up to USD 400/SGD 520 per Period of Cover	Already covered	Already covered	Already covered
<b>37. Out-Patient Charges – Option 3</b> (i) Emergency Out-Patient Benefit (ii) Pre and Post-Operative Out-Patient Charges: a. Medical Practitioner fees b. Teleconsultation c. Physiotherapy by a Registered Physiotherapist This Benefit replaces Benefit 22- Out-Patient Charges and Benefit 26 – Out-Patient Physiotherapy and Alternative Therapies.	(i) Up to USD 300/SGD 390 per Period of Cover in aggregate and subject to USD 25/SGD 30 Out-Patient Per Visit Excess (ii) Up to USD 3,500/SGD 4,550 per Medical Condition per Period of Cover Physiotherapy is up to 5 sessions within 90 days following hospitalisation in aggregate.	Not covered	Not covered	Not covered
<b>38. Wellness, Optical and Vaccinations</b>	Combined limit up to USD 500/SGD 650 Cover only available six months after selecting this Option	Combined limit up to USD 500/SGD 650 Cover only available six months after selecting this Option	Combined limit up to USD 500/SGD 650 Cover only available six months after selecting this Option	Combined limit up to USD 500/SGD 650 Cover only available six months after selecting this Option
<b>39. Wellness, Optical and Vaccinations – Option 2</b>	Not covered	Combined limit up to USD 1,000/SGD 1,300 Cover only available six months after selecting this Option	Combined limit up to USD 1,000/SGD 1,300 Cover only available six months after selecting this Option	Combined limit up to USD 1,000/SGD 1,300 Cover only available six months after selecting this Option
<b>40. Wellness and Vaccinations – Option 3</b>	Combined limit up to USD 250/SGD 325 Cover only available six months after selecting this Option	Combined limit up to USD 250/SGD 325 Cover only available six months after selecting this Option	Combined limit up to USD 250/SGD 325 Cover only available six months after selecting this Option	Combined limit up to USD 250/SGD 325 Cover only available six months after selecting this Option
<b>41. Hospital room restriction for residents in Singapore</b>	Optional	Optional	Optional	Optional
<b>42. Extended Evacuation and Repatriation</b>	Optional	Optional	Optional	Optional
<b>43. Removal of Maternity</b>	Not covered	Not covered	Not covered	Optional

Benefit	Essential	Advance	Excel	Apex
<b>Deductible Options</b>				
<b>Standard Deductible</b>	<i>Nil</i>	<i>Nil</i>	<i>Nil</i>	<i>Nil</i>
<b>Optional Deductibles</b>	<i>USD 150/SGD 195</i>	<i>USD 150/SGD 195</i>	<i>USD 150/SGD 195</i>	<i>USD 150/SGD 195</i>
	<i>USD 250/SGD 325</i>	<i>USD 250/SGD 325</i>	<i>USD 250/SGD 325</i>	<i>USD 250/SGD 325</i>
	<i>USD 500/SGD 650</i>	<i>USD 500/SGD 650</i>	<i>USD 500/SGD 650</i>	<i>USD 500/SGD 650</i>
	<i>USD 1,000/SGD 1,300</i>	<i>USD 1,000/SGD 1,300</i>	<i>USD 1,000/SGD 1,300</i>	<i>USD 1,000/SGD 1,300</i>
	<i>USD 2,500/SGD 3,250</i>	<i>USD 2,500/SGD 3,250</i>	<i>USD 2,500/SGD 3,250</i>	<i>USD 2,500/SGD 3,250</i>
	<i>USD 5,000/SGD 6,500</i>	<i>USD 5,000/SGD 6,500</i>	<i>USD 5,000/SGD 6,500</i>	<i>USD 5,000/SGD 6,500</i>
	<i>USD 10,000/SGD 13,000</i>	<i>USD 10,000/SGD 13,000</i>	<i>USD 10,000/SGD 13,000</i>	<i>USD 10,000/SGD 13,000</i>
	<i>USD 15,000/SGD 19,500</i>	<i>USD 15,000/SGD 19,500</i>	<i>USD 15,000/SGD 19,500</i>	<i>USD 15,000/SGD 19,500</i>
<b>Out-Patient Per Visit Excess</b>	▶ <i>Not covered</i>	▶ <i>Optional USD 25/SGD 30</i>	▶ <i>Optional USD 25/SGD 30</i>	▶ <i>Optional USD 25/SGD 30</i>
<b>Out-Patient Per Visit Excess – Option 2</b>	▶ <i>Not covered</i>	▶ <i>Optional USD 15/SGD 20</i>	▶ <i>Optional USD 15/SGD 20</i>	▶ <i>Optional USD 15/SGD 20</i>

## ► What We Don't Cover

There are some limitations that apply in addition to any personal exclusion we may detail in your Certificate of Insurance. These include treatments that may be considered a matter of personal choice (such as cosmetic treatment) and other treatments that are excluded from cover to keep premiums at an affordable level. For a full description, please refer to the members' handbook.

- |  |  |
|--|--|
| <ul style="list-style-type: none"> <li>1 Act of terrorism, war and illegal acts</li> <li>2 Administrative and shipping fees</li> <li>3 Alcohol and drug abuse</li> <li>4 Allergy Testing</li> <li>5 Chemical exposure</li> <li>6 Cosmetic treatment</li> <li>7 Contamination</li> <li>8 Chronic conditions (Essential plan only)</li> <li>9 Coma or Vegetative State</li> <li>10 Deductible, out-patient per visit excess or co-insurance</li> <li>11 Dental care<br/>– unless this additional option has been chosen</li> <li>12 Developmental disorders</li> <li>13 Dietary supplements and cosmetic products</li> <li>14 Eating disorders</li> <li>15 Experimental treatment and drugs</li> <li>16 Eyesight tests or vision correction, hearing tests, hearing or visual aids<br/>– except as stated in the benefit schedule</li> <li>17 External appliance and/or prosthesis</li> <li>18 Failure to follow medical advice</li> <li>19 Foetal surgery</li> <li>20 Genetic testing</li> <li>21 Hazardous sports and pursuits</li> <li>22 HIV, AIDS or sexually transmitted disease<br/>– except as stated in the benefit schedule</li> </ul> | <ul style="list-style-type: none"> <li>23 Hormone Replacement Therapy<br/>– unless caused due to medical intervention</li> <li>24 Obesity and Weight Loss</li> <li>25 Nursing homes, convalescence homes, health hydros and nature cure clinics</li> <li>26 Pregnancy or maternity<br/>– costs relating to pregnancy or childbirth, medically necessary and/or emergency caesarean section, voluntary caesarean section, unless maternity benefits are shown on the certificate of insurance</li> <li>27 Pre-existing Medical Conditions<br/>– unless agreed by us in writing</li> <li>28 Professional sports</li> <li>29 Reproductive medicine</li> <li>30 Routine examinations, health screening<br/>– except as stated in the benefit schedule</li> <li>31 Second opinions<br/>– unless agreed by us in writing as part of the added value Interconsultation® service</li> <li>32 Self-inflicted injuries or attempted suicide</li> <li>33 Sexual problems and gender re-assignment</li> <li>34 Sleep disorders</li> <li>35 Traditional Chinese Medicine</li> <li>36 Travel/accommodation costs<br/>– except those pre-authorised by us</li> <li>37 Travelling against medical advice</li> <li>38 Treatment by a family member</li> <li>39 Treatment charges outside of our reasonable and customary range</li> </ul> |
|--|--|



# Join us today

It's quick and easy to join us.

If you're looking for a simple and accessible approach to international health insurance, visit [www.now-health.com](http://www.now-health.com) or ask your intermediary for more information.







## Now Health International

### UAE

Arabia Insurance Company S.A.L.  
c/o Now Health International Gulf Third Party Administrators LLC,  
Regus Deira, Office 123 – 127, 1st Floor, Port Saeed Road,  
Next to Pullman City Centre Deira, Dubai, United Arab Emirates,  
PO Box 334337, Dubai, United Arab Emirates  
T +971 (0) 4450 1410 | F +971 (0) 4450 1416  
MEAService@worldcare.ae

### Rest of the World

Now Health International Limited  
PO Box 482055, Dubai, UAE  
T +971 (0) 4450 1510 | F +971 (0) 4450 1530  
CustomerService@now-health.com

### Europe (Malta)

Now Health International Services (Europe) Limited  
Dragonara Business Centre 5th Floor,  
Dragonara Road, St Julian's, STJ 3141, Malta  
T +356 2260 5110  
CustomerService@now-health.com

### Europe (Spain)

Now Health International Services (Europe) Limited  
Edificio Orense 34 (Torre Norte – Planta 07),  
Calle Orense 34, CP 28020 - Madrid, Spain  
T +34 911 841 690  
CustomerService@now-health.com

### United Kingdom

Now Health International (UK) Limited  
Suite 2.3, Building Three, Watchmoor Park, Camberley,  
Surrey, GU15 3YL, United Kingdom  
T +44 (0) 1276 602110 | F +44 (0) 1276 602130  
CustomerService@now-health.com

### Asia Pacific

Now Health International (Asia Pacific) Limited  
Units 1501-3, 15/F, AIA Tower, 183 Electric Road  
North Point, Hong Kong  
T +852 2279 7310 | F +852 2279 7330  
CustomerService@now-health.com

### China

Asia-Pacific Property & Casualty Insurance Co., Ltd.  
c/o Now Health International (Shanghai) Limited  
Room 1105, 11/F, BM Tower  
No. 218 Wusong Road  
Hongkou District, Shanghai 200080, China  
T +(86) 400 077 7500 / +86 21 6156 0910 | F +(86) 400 077 7900  
CustomerService@now-health.com

### Singapore

Now Health International (Singapore) Pte. Ltd.  
4 Robinson Road  
#07-01A/02 The House of Eden  
Singapore 048543  
T +65 6880 2300 | F +65 6220 6950  
CustomerService@now-health.com

### Indonesia

PT Now Health International Indonesia  
17/F, Indonesia Stock Exchange, Tower II  
Jl. Jend. Sudirman Kav. 52 – 53  
Jakarta 12190, Indonesia  
Toll-free 0800 1 889900/ Toll +62 21 2783 6910 | F +62 21 515 7639  
CustomerService@now-health.com

This plan is not a Medisave-approved plan and you may not use Medisave plan to pay the premium for this plan. If you are a citizen or permanent resident of Singapore, you are covered by MediShield Life for life, for treatments in Singapore, regardless of pre-existing medical conditions or other circumstances that you face. For more details on your coverage, please visit [www.medishieldlife.sg](http://www.medishieldlife.sg).

### Plan Owners' Protection Scheme

This plan is protected under the Policy Owners' Protection Scheme which is administered by the Singapore Deposit Insurance Corporation (SDIC). Coverage for your plan is automatic and no further action is required from you. For more information on the types of benefits that are covered under the scheme as well as the limits of coverage, where applicable, please contact your insurer or visit the General Insurance Association of Singapore (GIA)/Life Insurance Association of Singapore (LIA) or SDIC websites ([www.gia.org.sg](http://www.gia.org.sg) or [www.lia.org.sg](http://www.lia.org.sg) or [www.sdic.org.sg](http://www.sdic.org.sg)).

Now Health International (Singapore) Pte. Ltd.(No.201317502C) is a general insurance agent of Sompo Insurance Singapore Pte. Ltd. and is registered with the Agents' Registration Board of the General Insurance Association of Singapore (GIA).  
Registered at 16 Raffles Quay #33-03 Hong Leong Building Singapore 048581.  
Visit [www.sompo.com.sg](http://www.sompo.com.sg) to find out more about Sompo Singapore.